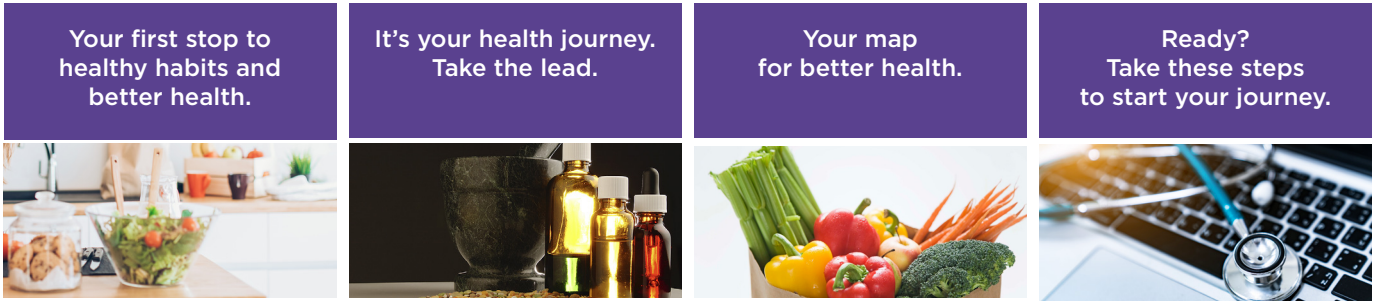


# MARATHON HEALTH EMPLOYEE WELL-CARE CENTERS



Log in and explore all the resources available to you at: [https://member.ourhealth.org/sign\\_in](https://member.ourhealth.org/sign_in)

## Appointment Details

Eligible members can schedule appointments at any of the three Well-Care Centers.

Call any of the three Well-Care Centers or **log on to the Marathon eHealth Portal** to make an appointment. Same-day appointments may be available.

Appointments typically last 20-30 minutes.

**Please bring your insurance card and photo ID to your appointment.**

There is no charge for the healthcare services provided at the Well-Care Centers, however, some lab tests may require additional payment. Contact the Well-Care Center for questions about fees.

**The Well-Care Centers carry commonly-prescribed medications, which can be dispensed during your appointment for no charge after diagnosis from a Well-Care Center provider.** Additionally, medications can be dispensed during your subsequent appointments after diagnosis is reaffirmed, refilled through a pharmacy, or by mail-order. If you use a pharmacy or mail-order, your usual copayment will apply.

Marathon Health protects your health information in compliance with state and federal privacy laws.

## Locations

<b>Central</b> ESF Overflow Parking Lot 2694 Judge Fran Kamieson Way Melbourne, FL 32940 <b>321.252.1169</b> Mon/Tues: 6:30 a.m. - 5:00 p.m. Wed/Thu: 6:30 a.m. - 7:00 p.m. Fri: 7:00 a.m. - 7:00 p.m. <b>Saturday:</b> 8:00 a.m. - 1:30 p.m.	<b>South</b> Central Middle School 2550 Wingate Blvd. West Melbourne, FL 32904 <b>321.369.9514</b> Mon/Wed: 9:00 a.m. - 6:00 p.m. Tue/Thu: 6:30 a.m.- 5:30 p.m. Fri: 10:00 a.m. - 2:00 p.m.	<b>North</b> Jackson Middle School 1505 Knox McRae Drive Titusville, FL 32780 <b>321.222.9070</b> Mon/Thurs: 7:00 a.m. - 6:00 p.m. Tue/Wed/Fri: 7:00 a.m. - 7:00 p.m. <b>Saturday:</b> 8:00 a.m. - 1:30 p.m.
---	--	---

# MARATHON HEALTH EMPLOYEE WELL-CARE CENTERS

## The Well-Care Centers

BPS offers all employees and their families (age 6+, enrolled in the BPS health plan) access to receive medical care at one of three on-site health centers. A medical doctor, registered nurse and a certified medical assistant staff most centers. All treatment rendered at a center is at no cost, including drugs dispensed on site by the center’s physician.

A Well-Care Center can be the first stop for eligible employees and retirees before seeing a specialist for minor injuries and common health concerns, including skin conditions, joint pains, common illnesses, headaches, and digestive issues.

## The Marathon eHealth Portal

In addition to the on-site centers, personalized healthcare is accessible via the Marathon eHealth Portal and helps you get the most out of your new healthcare benefit. The eHealth Portal is one of the most important stops on your journey to better health. Use it to schedule appointments, view your health record, communicate with clinicians, and learn more about health conditions.

As a member of the BPS health plan, you, your spouse, and your kids ages 6 and up can take advantage of a wide range of personalized, confidential healthcare services at no cost including:

Common Illness	Minor Injury	Health Assessment	Health Coaching	Chronic Conditions
<ul style="list-style-type: none"> <li>Allergies</li> <li>Digestive problems</li> <li>Eye irritations and Infections</li> <li>Headaches</li> <li>Respiratory issues</li> <li>Skin conditions</li> <li>Urinary symptoms</li> </ul>	<ul style="list-style-type: none"> <li>Back pain</li> <li>Burns</li> <li>Extremity pain</li> <li>Joint pain</li> <li>Sprains &amp; strains</li> </ul>	<ul style="list-style-type: none"> <li>Blood pressure</li> <li>Cholesterol</li> <li>Glucose</li> <li>Height</li> <li>Physicals</li> <li>Weight</li> </ul>	<ul style="list-style-type: none"> <li>Nutrition</li> <li>Physical activity</li> <li>Smoking cessation</li> <li>Stress management</li> <li>Weight loss</li> </ul>	<ul style="list-style-type: none"> <li>Asthma</li> <li>Depression</li> <li>Diabetes</li> <li>Heart conditions</li> <li>High blood pressure</li> <li>Low back pain</li> </ul>

For a list of of medications available onsite at all BPS well-centers please visit: <https://fl02201431.schoolwires.net/cms/lib/FL02201431/Centricity/Domain/1149/Brevard%20Onsite%20Dispensary%20as%20of%201-1-20.pdf>

<p><b>Primary Care Services</b></p> <p>Common health concerns, including illnesses and minor injuries. Also includes health screenings, lab tests, and dispensing of common medications, including prescriptions for conditions treated at the centers. (Available to eligible employees and retirees).</p>	<p><b>Understand Health</b></p> <p>Through biometric tests and health assessment questionnaires, healthcare providers can draw attention to health risks and answer questions about concerns.</p>	<p><b>Wellness Plans</b></p> <p>Wellness plans are like road maps to help people manage chronic conditions. They also address concerns about stress, diet, exercise, smoking, and other factors that impact health.</p>
---	---	---

## WELLNESS

Save \$1,000 on an Individual deductible or \$2,000 on a Family Deductible!

[my.marathon-health.com](https://my.marathon-health.com)  
North: 321.222.9070  
Central: 321.252.1167  
South: 321.369.9514

If you complete BOTH the Biometric Screening (1st) and Health Assessment (2nd) in order and by the designated due date.

Biometric screenings can be completed at any of the three BPS Employee Well-Care Centers and are free. You can log-in to schedule a biometric screening appointment at [https://member.ourhealth.org/sign\\_in](https://member.ourhealth.org/sign_in) or call one of the locations listed above.

You may also have a biometric screening performed by your own primary care doctor. However, it must be performed during your annual physical and the PCP Biometric Screening form must be used. It can be accessed here: [https://member.ourhealth.org/sign\\_in](https://member.ourhealth.org/sign_in)

Health Assessments can be completed via [mycigna.com](https://my.cigna.com) if you are currently enrolled for medical coverage. If you are newly enrolling for medical coverage, complete your Health Assessment via <https://my.cigna.com/?token=3308496>. Please note that you'll need to first register with Cigna before you are able to complete the Health Assessment.

